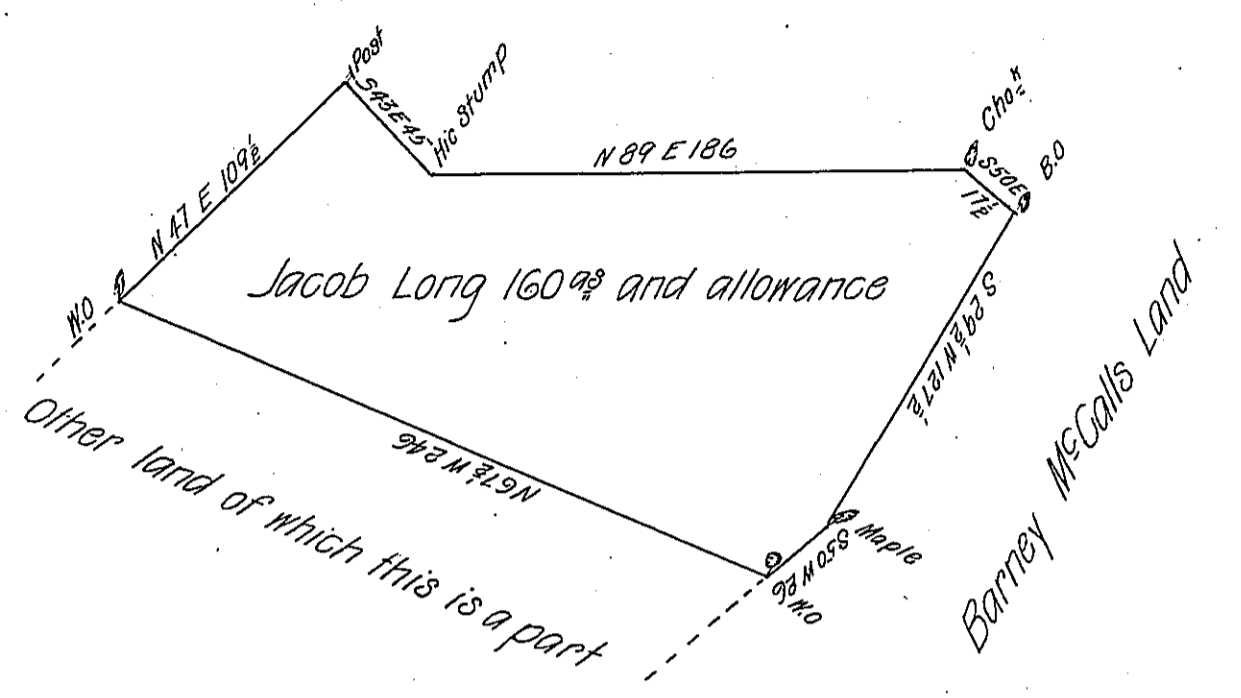


Ralph Cherrys Land



Whereas in pursuance of a Warrant dated Decr 13<sup>th</sup> 1786 there was Survey'd to W<sup>m</sup> Perry and Robert Worthington a tract of land situate in Mount-pleasant township in the County of Westmoreland and Whereas — Jacob Long hath requested me to divide the said tract of land in Order that he might obtain a Patent for a part thereof on the 28<sup>th</sup> day of May 1804. I have Survey'd above described piece of land part of <sup>the</sup> tract afforesaid Containing One hundred and sixty acres and an allowance of six P. Cent. Situate in the Township and County afforesaid :

John Moore D. S.

To Samuel Cochran Esq<sup>r</sup>  
 Surv<sup>r</sup> Gen<sup>l</sup> of Penn<sup>a</sup>

IN TESTIMONY that the above is a copy of the original remaining on file in the Department of Internal Affairs of Pennsylvania, made conformably to an Act of Assembly approved the 16th day of February, 1833, I have hereunto set my Hand and caused the Seal of said Department to be affixed at Harrisburg, this ninth day of July 1906

*Geo. C. Brown*  
 Secretary of Internal Affairs.